

- LEGEND**
- FOUND STONE
 - MONUMENT - SET
 - MONUMENT - FOUND
 - BOUNDARY ANGLE PT.
 - SEE SHEET 3 - CURVE DATA

OAKBROOK 5TH ADDITION

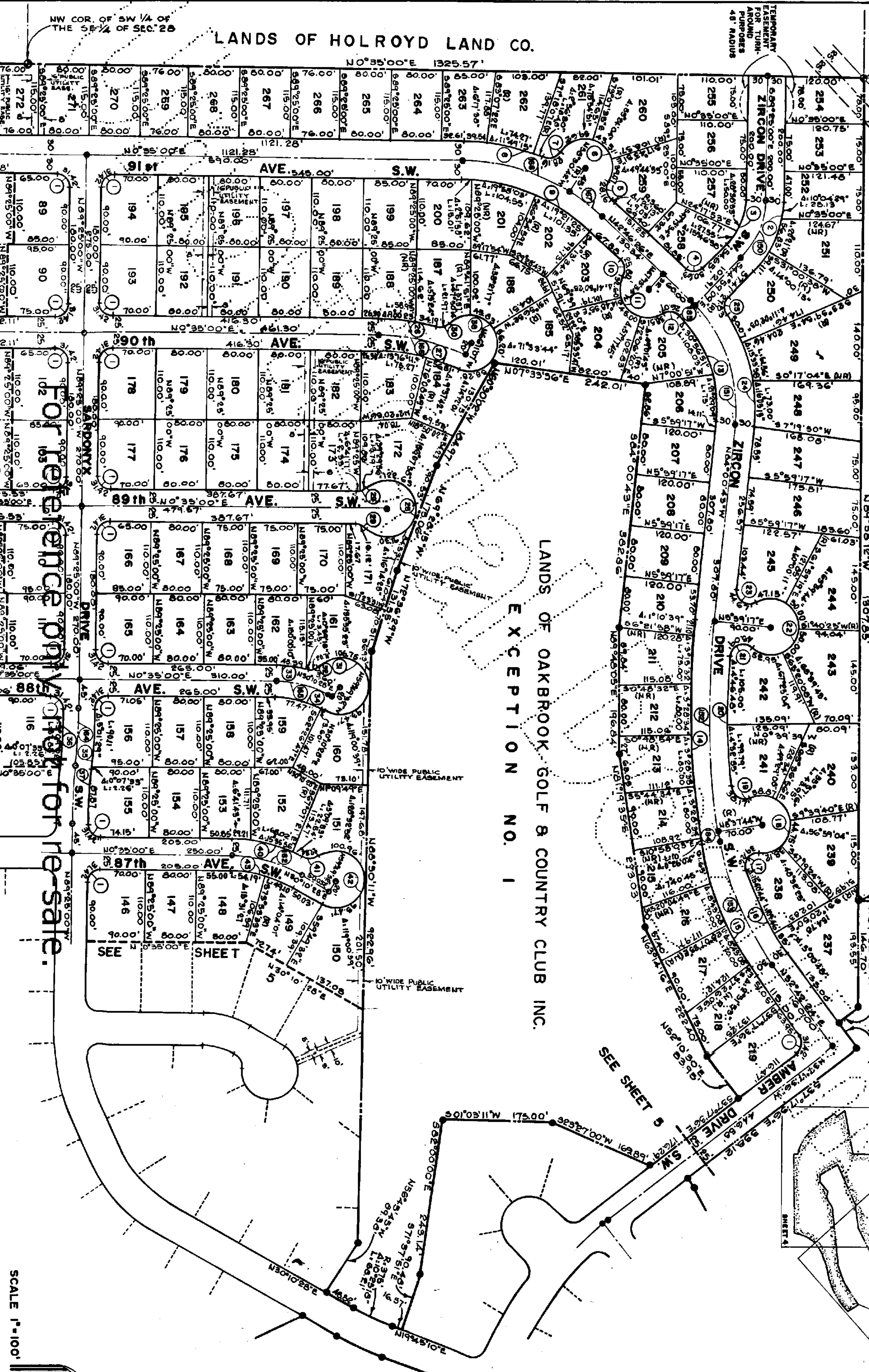
A PORTION OF S. 1/2 SEC. 28, T20N., R2E., W.M.,
PIERCE COUNTY
WASHINGTON

TEMPORARY EASEMENT LANDS OF HOLROYD LAND CO.
FOR INGRESS & EGRESS
EXPIRES OCT. 4, 1972

NE COR. OF NW 1/4
OF THE SE 1/4
SECTION 28

LANDS OF HOLROYD LAND CO.

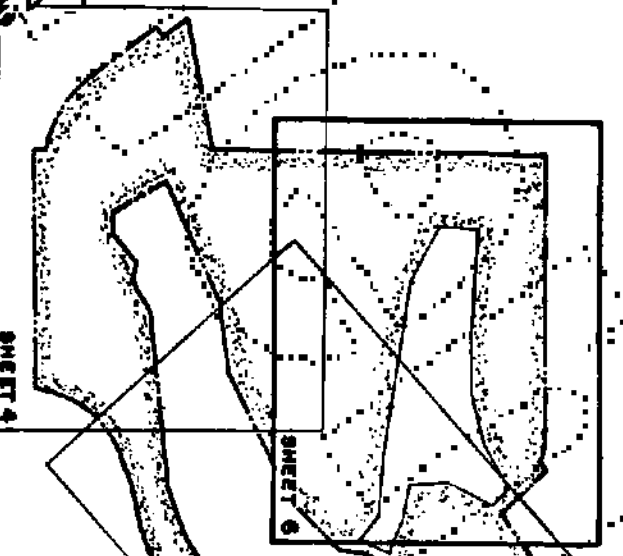
LANDS OF OAKBROOK GOLF & COUNTRY CLUB INC.
EXCEPTION NO. 1



For reference only not for resale.

SEE SHEET 4

SEE SHEET 5



SCALE 1"=100'

NORTH