

# OAKBROOK 6TH ADD'N.

IN THE SW 1/4, SEC. 28, T.20N., R.2E., W.M.  
PIERCE CO., WASH.

## ENGINEERS CERTIFICATE

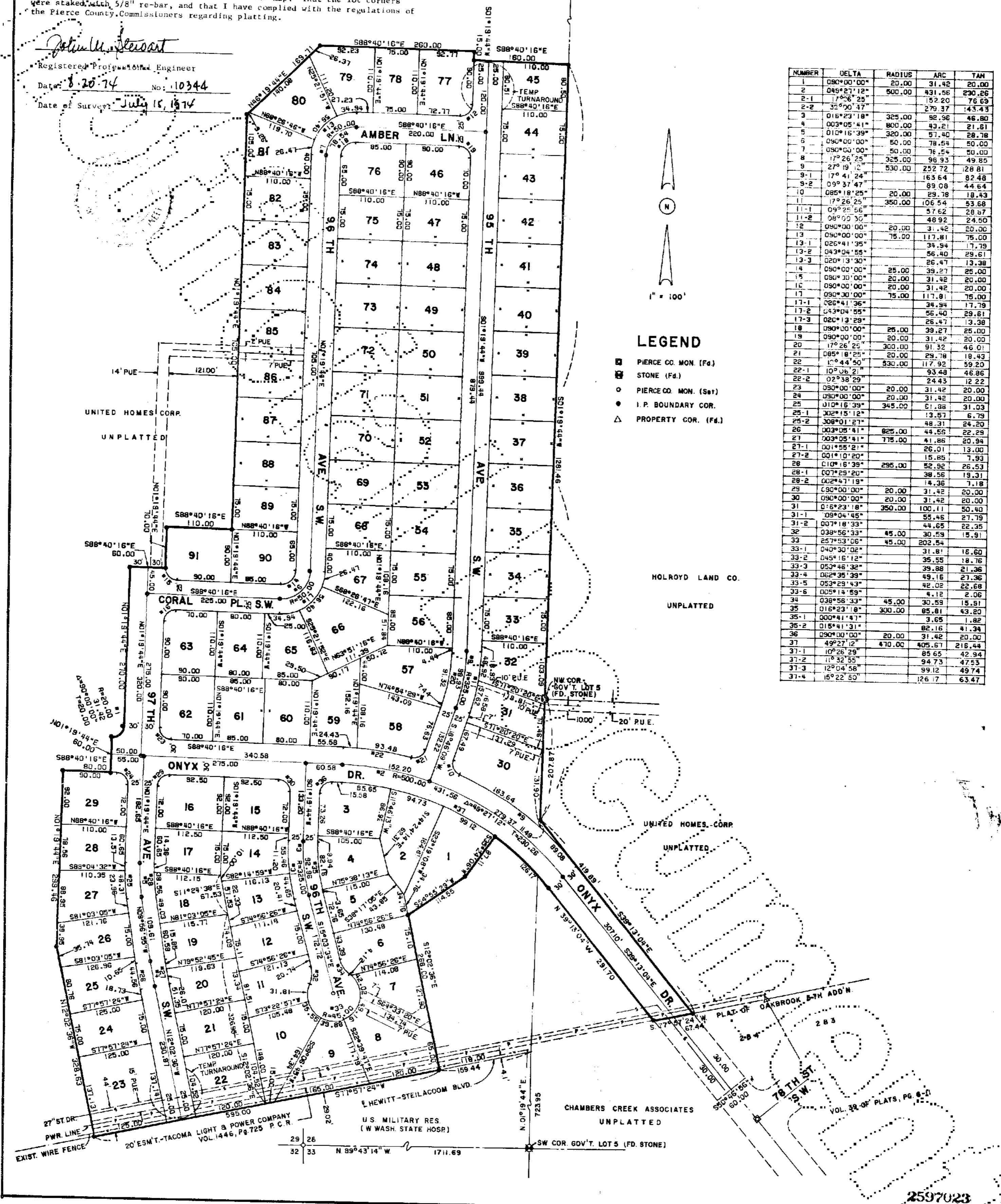
I hereby certify that the within plat of "Oakbrook 6th Addition" is based upon a true survey. That the bearings and distances are shown correctly and the monuments were found and set as indicated on the map. That the lot corners were staked with 5/8" re-bar, and that I have complied with the regulations of the Pierce County Commissioners regarding platting.

*John M. Stewart*  
Registered Professional Engineer

Date: 8-20-74 No: 10344

Date of Survey: July 15, 1974

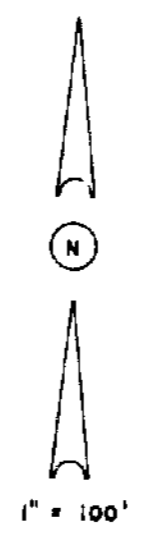
NE. Cor. Thos. M. Chambers D.L.C. not fd.



NUMBER	DELTA	RADIUS	ARC	TAN
1	090°00'00"	20.00	31.42	20.00
2	089°27'12"	500.00	431.56	230.26
2-1	17°56'25"		152.20	76.69
2-2	32°00'47"		279.37	143.43
3	016°23'18"	325.00	92.96	46.80
4	003°05'41"	800.00	43.21	21.61
5	010°16'39"	320.00	57.40	28.76
6	090°00'00"	50.00	78.54	50.00
7	090°00'00"	50.00	78.54	50.00
8	172°26'25"	325.00	96.93	49.85
9	27°19'12"	530.00	252.72	28.81
9-1	17°41'24"		163.64	82.46
9-2	09°37'47"		89.08	44.54
10	085°18'25"	20.00	29.38	18.43
11	172°26'25"	350.00	106.54	53.68
11-1	09°25'56"		57.62	28.57
11-2	08°00'30"		48.92	24.50
12	090°00'00"	20.00	31.42	20.00
13	090°00'00"	75.00	117.81	75.00
13-1	026°41'35"		34.94	17.79
13-2	043°04'55"		56.40	29.61
13-3	020°13'30"		26.47	13.38
14	090°00'00"	25.00	39.27	25.00
15	090°00'00"	20.00	31.42	20.00
16	090°00'00"	20.00	31.42	20.00
17	090°00'00"	75.00	117.81	75.00
17-1	026°41'36"		34.94	17.79
17-2	043°04'55"		56.40	29.61
17-3	020°13'29"		26.47	13.38
18	090°00'00"	25.00	39.27	25.00
19	090°00'00"	20.00	31.42	20.00
20	17°26'25"	300.00	91.32	46.01
21	085°18'25"	20.00	29.38	18.43
22	17°44'50"	530.00	117.92	59.20
22-1	10°06'27"		93.48	46.86
22-2	02°38'29"		24.43	12.22
23	090°00'00"	20.00	31.42	20.00
24	090°00'00"	20.00	31.42	20.00
25	31°04'15'39"	345.00	61.88	31.03
25-1	302°15'12"		13.57	6.79
25-2	308°01'21"		48.31	24.20
26	003°05'41"	825.00	44.56	22.29
27	003°05'41"	775.00	41.86	20.94
27-1	001°55'21"		26.01	13.00
27-2	001°10'20"		15.85	7.93
28	010°16'39"	295.00	52.92	26.53
28-1	007°25'20"		38.56	19.31
28-2	002°47'19"		4.12	2.08
29	090°00'00"	20.00	31.42	20.00
30	090°00'00"	20.00	31.42	20.00
31	016°23'18"	350.00	100.11	50.40
31-1	09°04'45"		55.45	27.79
31-2	007°18'33"		44.65	22.35
32	038°56'33"	45.00	30.59	15.91
33	257°53'06"	45.00	202.84	
33-1	040°30'02"		31.81	15.60
33-2	045°16'12"		35.55	18.76
33-3	052°46'32"		39.88	21.36
33-4	062°35'39"		49.16	27.36
33-5	052°29'43"		42.02	22.68
33-6	005°14'59"		4.12	2.08
34	038°56'33"	45.00	30.59	15.91
35	016°23'18"	300.00	85.81	43.20
35-1	000°41'47"		3.65	1.82
35-2	015°41'31"		82.16	41.34
36	090°00'00"	20.00	31.42	20.00
37	49°27'12"	470.00	405.67	216.44
37-1	10°26'29"		85.65	42.94
37-2	11°32'55"		94.73	47.53
37-3	12°04'58"		99.12	49.74
37-4	15°22'53"		126.17	63.47

**LEGEND**

- PIERCE CO. MON. (Fd.)
- STONE (Fd.)
- PIERCE CO. MON. (Set)
- I.P. BOUNDARY COR.
- △ PROPERTY COR. (Fd.)



For reference only, not for re-sale.

# OAKBROOK 6TH ADDITION

## DIVISION 2

IN THE SW 1/4, SEC. 28, T.20N., R.2E., W.M.  
PIERCE CO., WASH.

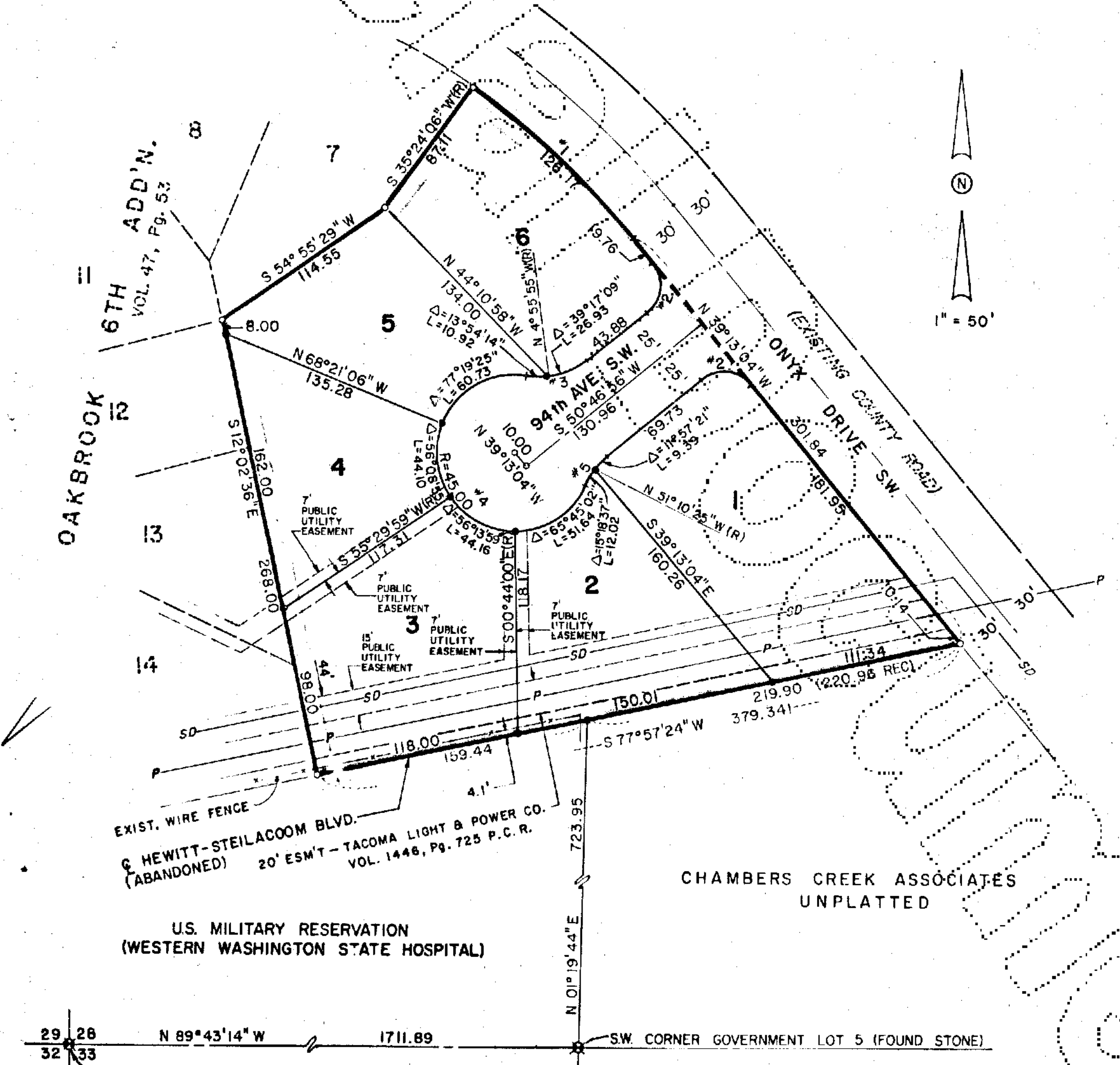
**NOTE:**

A PERPETUAL UTILITY EASEMENT (P.U.E.) SEVEN FEET WIDE ALONG THE SOUTH LOT LINE OF LOT 4 AND SEVEN FEET WIDE ALONG THE NORTH LOT LINE OF LOT 3 IS GRANTED TO PIERCE COUNTY WITH A RIGHT OF IMMEDIATE ENTRY AND CONTINUED ACCESS FOR THE PURPOSE OF CONSTRUCTION, IMPROVEMENT, MAINTENANCE AND REPAIR OF SEWER LINES, MANHOLES, AND OTHER APPURTENANT SEWER STRUCTURES, OVER, UNDER, ALONG AND ACROSS.

**CURVE DATA TABLE**

Number	Delta	Radius	Arc	Tan
1	015° 22' 50"	470.00		
2	090° 00' 00"	20.00	31.42	20.00
3	048° 11' 23"	45.00	37.85	20.12
4	255° 27' 21"	45.00	200.63	
5	027° 15' 58"	45.00	21.41	10.91

For reference only, not for re-sale.



29 28 N 89° 43' 14" W 1711.89  
32 33 FOUND STONE MON.

SW CORNER GOVERNMENT LOT 5 (FOUND STONE)

- LEGEND**
- STONE (Found)
  - PIERCE COUNTY STANDARD MONUMENT (Set)
  - IRON PIPE BOUNDARY CORNER
  - SD- STORM DRAIN
  - P- POWER LINE

2716521