

TIFFANY PARK

A PORTION OF SECTION 28, T20N, R2E, W.M.
PIERCE COUNTY, WA.

UNPLATTED PIERCE COUNTY

NE COR. P.L.C. NOT
ROUND - LINE ESTABLISHED
FROM OAKBROOK 6th ADDN.

NW Cor. Gov. Lot 3,
Sec. 28, T20N, R2E, W.M.
(CALC.)

N 1/4 of Gov. Lot 3, Sec. 28, T20N, R2E, W.M.

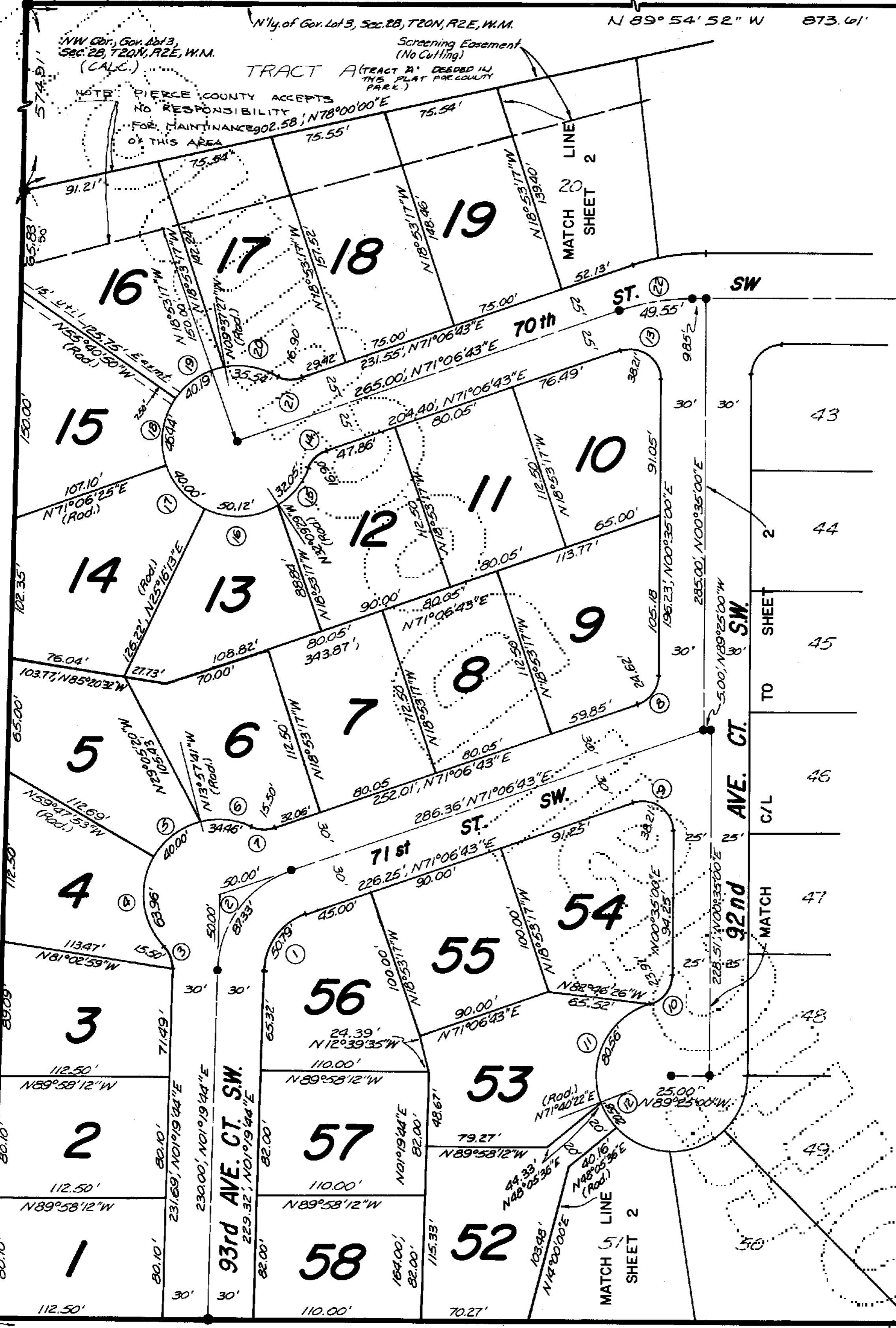
N 89° 54' 52" W 873.61'

NE Cor. Gov. Lot 3,
Sec. 28, T20N, R2E, W.M.

NOTE: PIERCE COUNTY ACCEPTS
NO RESPONSIBILITY
FOR MAINTINANCE OF THIS AREA

TRACT A (TRACT B DEEDED IN
THIS PLAT FOR COUNTY
PARCEL.)

Screening Easement
(No Cutting)



- - SET MONUMENT (P.CO. STD.)
 - - FD. MONUMENT (P.CO. STD.)
- SET 5/8" BAR W/CAP AT ALL LOT CORNERS.

12	23°34'46"	1044'	20.58'
13	108°28'17"	2828'	38.21'
14	49°59'41"	9.32'	17.45'
15	36°43'29"	16.60'	32.05'
16	57°25'42"	27.39'	50.12'
17	45°50'12"	21.14'	40.00'
18	53°12'45"	25.04'	46.44'
19	46°08'23"	21.25'	40.19'
20	40°29'51"	18.56'	35.59'
21	49°59'41"	9.32'	17.45'
22	108°28'17"	2828'	38.21'

1	81°10'	69°46'59"	2908'	50.79'
2	71°10'	69°46'59"	50.00'	87.33'
3	20.00'	44°24'55"	8.16'	15.50'
4	50.00'	73°17'18"	37.19'	63.96'
5	50.00'	45°50'12"	21.14'	40.00'
6	50.00'	39°29'19"	17.95'	34.46'
7	20.00'	44°24'55"	8.16'	15.50'
8	20.00'	70°31'43"	14.14'	24.62'
9	20.00'	109°28'17"	28.28'	38.21'
10	20.00'	73°23'54"	14.91'	25.62'
11	50.00'	92°18'32"	80.56'	109.05'

OAKBROOK 7th ADDN.

OAKBROOK 7th ADDN.
TWP. 20N., RGE. 2E., W.M.
NOT SET AS OF 8/15-77

ZIRCON DR. SW.
N 1° 19' 44" E 247.97'

SW COR., GOV'T. LOT 3, Sec. 28
TWP. 20N., RGE. 2 E., W.M.

HOLROYD INC.

ACCESS TO THIS PLAT DEEDED
UNDER PIERCE COUNTY AUDITOR'S
FEE NO. 2656547



NILS RONHOVDE & ASSOC.
Land Planning - Surveying - Engineering
2626 NO. BRISTOL - TACOMA, WA. 98407
PH: 759-1908
SURVEYS - SHORT PLATS - SUBDIVISIONS

TIFFANY PARK

A PORTION OF SECTION 28, T20N, R2E, W.M.
UNPLATTED PIERCE COUNTY PIERCE COUNTY, WA.

Sheet 2 of 3 Sheets

N⁴ COR. SEC. 28,
TWP. 20 N., R2E. 2E.,
W.M. - STONE

NE Cor. Gov. Lot 3,
Sec. 28, T20N
R2E, W.M.
(CALC.)

N.W. Cor. Gov. Lot 3,
Sec. 28, T20N, R2E, W.M.

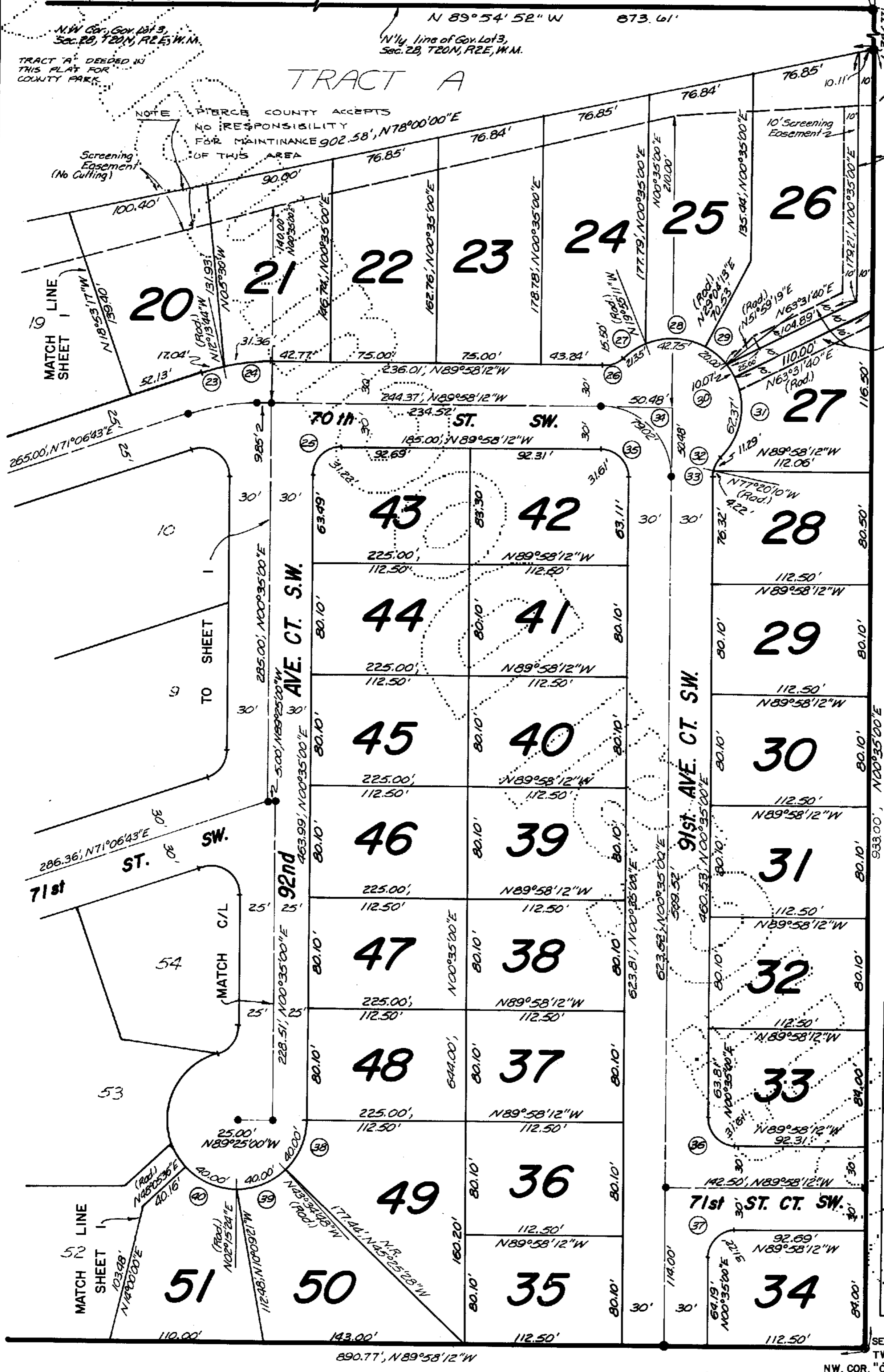
TRACT 'A' DEEDED IN
THIS PLAT FOR
COUNTY PARK.

NOTE: PIERCE COUNTY ACCEPTS
NO RESPONSIBILITY
FOR MAINTENANCE
OF THIS AREA

Screening
Easement
(No Cutting)

10' Walkway
dedicated to
County on this
Plot.

Scale: 1"=50'
NORTH



- SET MONUMENT (P. CO. STD.)
- FD. MONUMENT (P. CO. STD.)
- SET 5/8" BAR W/CAR AT LOT CORNERS.

HOLROYD INC.

34	50.00'	90°33'12"	50.48'	79.02'
35	20.00'	90°33'12"	20.19'	31.61'
36	20.00'	90°33'12"	20.19'	31.61'
37	20.00'	89°26'48"	19.81'	31.22'
38	50.00'	45°50'12"	21.14'	40.00'
39	50.00'	45°50'12"	21.14'	40.00'
40	50.00'	45°50'12"	21.14'	40.00'

No.	Rod	L		
23	146.592'	8.53'	17.04'	
24	176.592'	15.74'	31.36'	
25	20.00'	89°26'48"	19.81'	31.22'
26	20.00'	44°24'55"	8.16'	15.50'
27	50.00'	24°27'56"	10.84'	21.35'
28	50.00'	48°59'24"	22.78'	42.75'
29	50.00'	27°55'06"	10.14'	20.00'
30	50.00'	1°32'12"	5.05'	10.07'
31	50.00'	7°28'15"	35.98'	62.37'
32	20.00'	32°20'05"	5.80'	11.29'
33	20.00'	12°04'50"	2.12'	4.22'

SE COR., GOV'T. LOT 3, SEC. 28,
TWP. 20 N., R2E. 2 E., W.M.
NW COR. "OAKBROOK" 5th ADD.

HOLROYD INC.

ACCESS TO THIS PLAT DEEDED
UNDER PIERCE COUNTY AUDITOR'S
FEE NO.

Nils Ronhovde

NILS RONHOVDE & ASSOC.
Land Planning - Surveying - Engineering
2626 NO. BRISTOL - TACOMA, WA. 98407
PH. 759-1908

For reference only, not for re-sale.